

An aerial photograph of Greater Manchester, showing a dense urban area with numerous buildings, including several tall skyscrapers in the distance. The foreground is dominated by lush green trees and a residential area with red-roofed houses. The sky is a clear, pale blue.

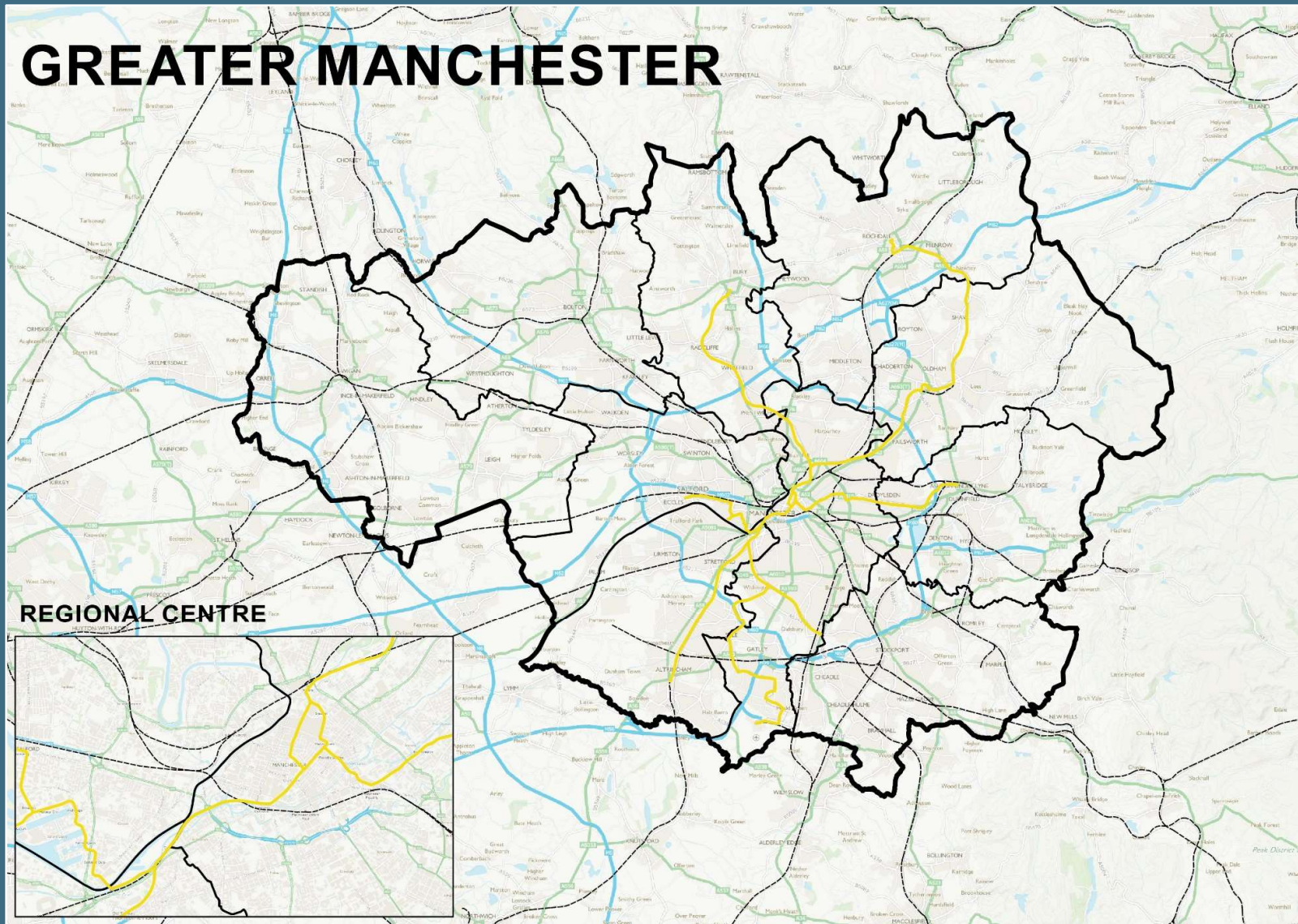
# Introducing Greater Manchester

**GREATER  
MANCHESTER**  
DOING THINGS DIFFERENTLY



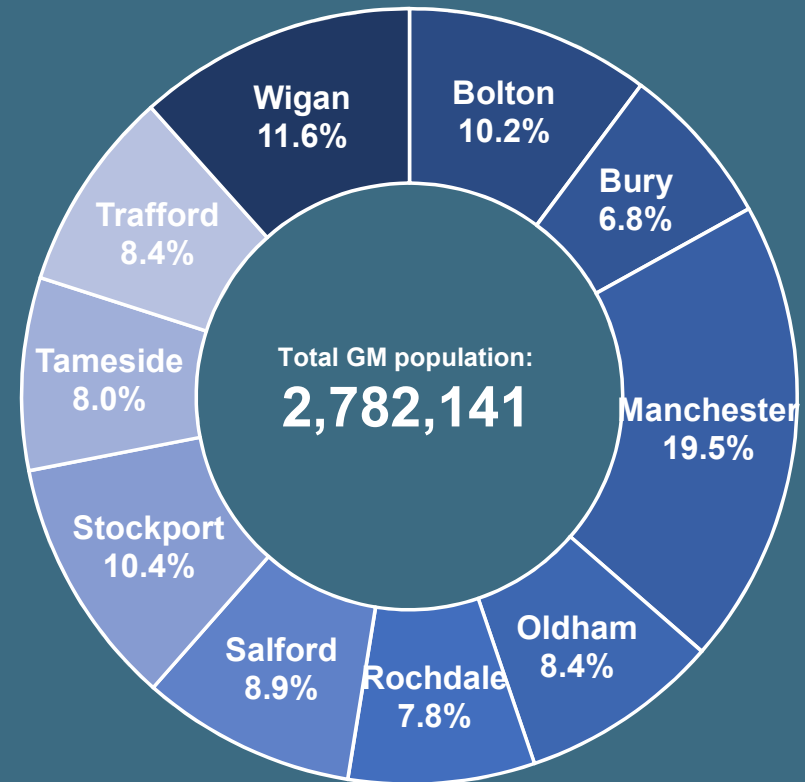
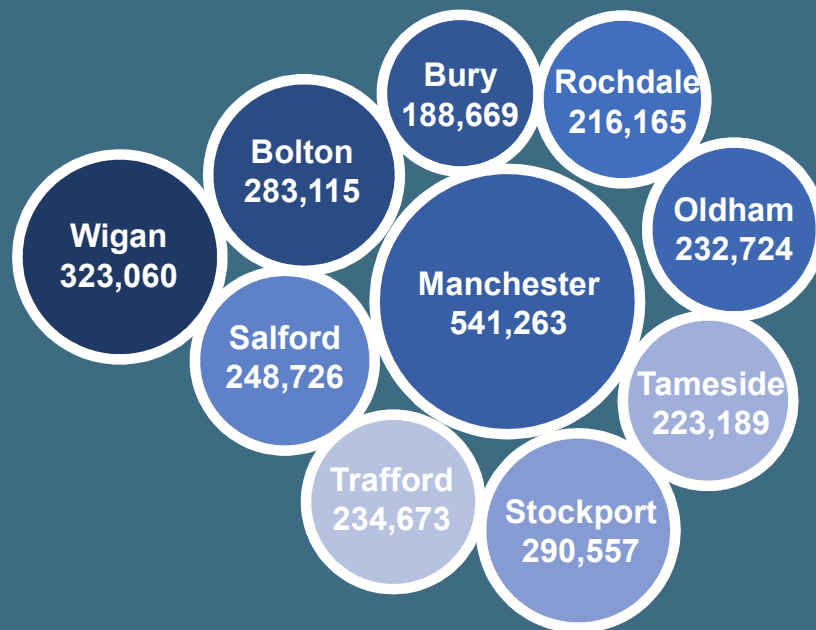
# GREATER MANCHESTER

## REGIONAL CENTRE



**GREATER  
MANCHESTER**  
DOING THINGS DIFFERENTLY

# DISTRICTS



# ECONOMY

2.8m people  
+240,000 since 2000



1.3m working in GM  
+100,000 over next 10 years

110,000 businesses



Over 100,000 Higher  
Education Students  
at 5 HE Institutions

Gross Value Added

GREATER  
MANCHESTER  
ECONOMY

**£58bn**

BIGGER  
THAN

WALES  
ECONOMY

**£55.8bn**

NORTH EAST  
ECONOMY

**£49.7bn**

NORTHERN  
IRELAND  
ECONOMY

**£34.4bn**

**GREATER  
MANCHESTER**  
DOING THINGS DIFFERENTLY

# TIMELINE



Greater Manchester Council abolished



Marketing Manchester established



RDAs established

'Greater Manchester Strategy – Sharing the Vision' published

Greater Manchester Multi Area Agreement

Transport referendum held (congestion charging)



Association of Greater Manchester Authorities and GMPTA/E established



AGMA  
ASSOCIATION OF  
GREATER MANCHESTER  
AUTHORITIES

City Pride Partnership created

MIDAS established



Manchester Enterprises established



City Region Development Programme

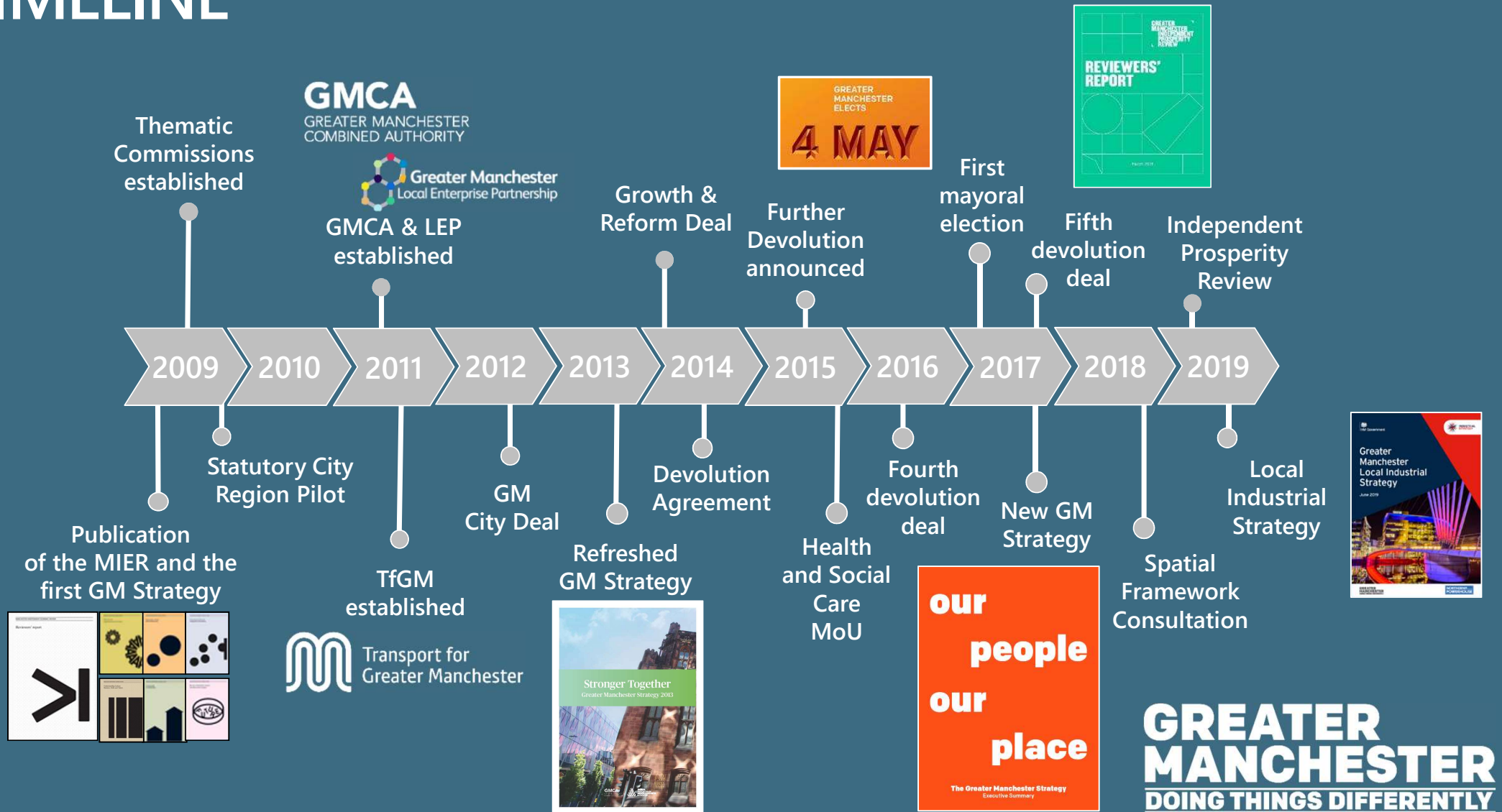
New Economy established



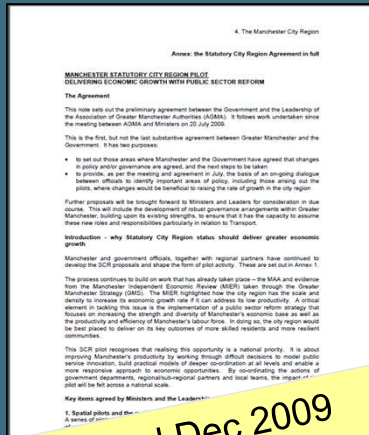
**GREATER MANCHESTER**  
**DOING THINGS DIFFERENTLY**



# TIMELINE



# DEVOLUTION DEALS



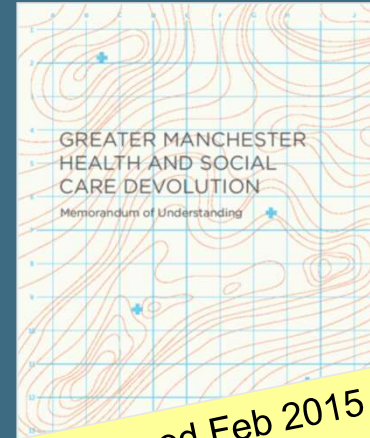
## Deal 0: Agreed Dec 2009

Statutory City Region Pilot created, covering transport, total place public services, employment programmes, housing and planning, low carbon, inward investment and innovation, and post-16 skills.



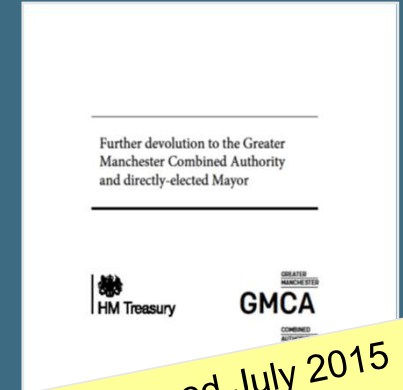
## Deal 1: Agreed Nov 2014

New powers for GMCA on condition of agreeing an elected mayor who will fulfil role of Police & Crime Commissioner. Powers cover transport, business support, employment & skills support, spatial planning, housing investment, earnback and governance reforms.



## Deal 2: Agreed Feb 2015

Bringing together health & social care budgets – £6bn – to deliver better outcomes for GM. Followed up by agreement in late 2015 for a £450m Health and Social Care Transformation Fund.



## Deal 3: Agreed July 2015

Included fundamental review of service for children, creation of a Greater Manchester Land Commission, transfer of Fire & Rescue responsibilities to the GM Mayor.

**GREATER MANCHESTER**  
**DOING THINGS DIFFERENTLY**

# DEVOLUTION DEALS

Further devolution to the Greater Manchester Combined Authority and directly-elected Mayor



GMCA

## Deal 4: Agreed Nov 2015

Included further transport devolution (including looking at options for control of rail stations), social housing reform, and control over EU funding

Further devolution to the Greater Manchester Combined Authority and directly-elected Mayor



GMCA

## Deal 5: Agreed Mar 2016

Included establishment of GM Life Chances Fund, Criminal Justice Devolution, and piloting of 100% business rates retention

Greater Manchester Autumn Budget 2017  
Update: Further commitments between Government and the Greater Manchester Combined Authority (GMCA) and the directly elected mayor



GMCA

## Deal 6: Agreed Nov 2017

Included local industrial strategy pilot, homelessness funding, Transforming Cities Funding, post-16 education and training, and Mayoral capacity funding.

**GREATER MANCHESTER**  
**DOING THINGS DIFFERENTLY**



# GREATER MANCHESTER STRATEGY



**our  
people  
our  
place**

**The Greater Manchester Strategy**

**GREATER  
MANCHESTER**  
**DOING THINGS DIFFERENTLY**

# UNIFIED MODEL OF PUBLIC SERVICES

## Our Principles of Public Service Reform

### From principles to practice

Our principles have provided the foundation of the Greater Manchester model.

- A new relationship between public services and citizens, communities and businesses that enables shared decision making, democratic accountability and voice, genuine co-production and joint delivery of services.
- An asset based approach that recognises and builds on the strengths of individuals, families and our communities rather than focussing on the deficits.
- Behaviour change in our communities that builds independence and supports residents to be in control.
- A place based approach that redefines services and places individuals, families, communities at the heart.
- A stronger prioritisation of wellbeing, prevention and early intervention.
- An evidence led understanding of risk and impact to ensure the right intervention at the right time.
- An approach that supports the development of new investment and resourcing models, enabling collaboration with a wide range of organisations.

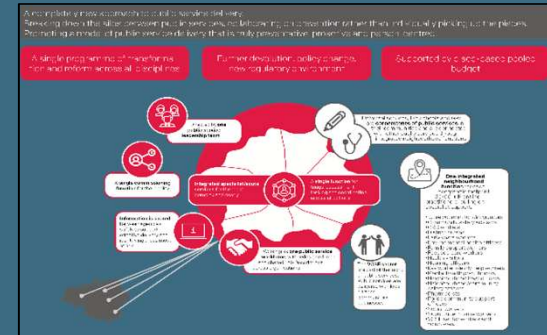
It is now time to move from principles to practice.

## Six Key Features of the Delivery Model

The 6 Key Features of the Operating Model for all Public Service, Health and Care Organisations in Greater Manchester



## The Greater Manchester Model of Unified Public Services



With the Health & Care Prospectus then setting out the implications for health & care services, and the next steps in health & care devolution.

**GREATER  
MANCHESTER**  
DOING THINGS DIFFERENTLY

# FUTURE OF GM



## Future of GM – Jan 2019

- Five Year Environment Plan
- Work & Skills Plan
- GMSF
- Housing Strategy
- Infrastructure Plan
- Digital Strategy
- Cultural Strategy
- Local Industrial Strategy



# **GREATER MANCHESTER**

---

## **DOING THINGS DIFFERENTLY**